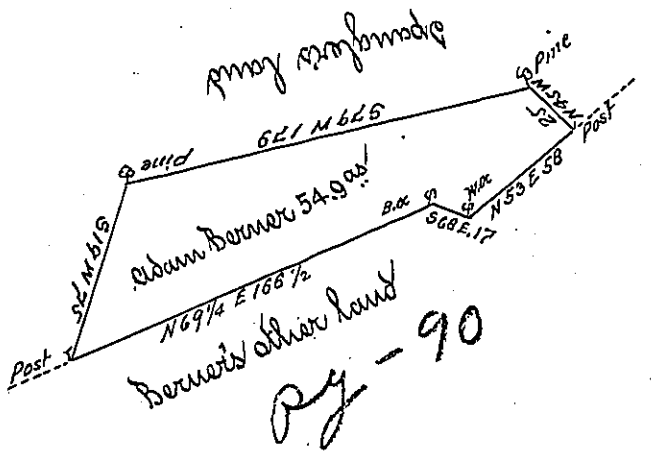


Courses & Distances

- 368 E. 17
- N 53 E. 58
- N 45 W. 25
- S 79 W. 179
- S 19 W 75
- N 69 1/4 E 166 1/2



The Draught of a tract of land situate in Greenwood township Cumberland County containing fifty four acres & nine tenths of an acre to the usual allowance of six P. Cent. for roads be surveyed for Adam Berner Jan<sup>y</sup> 16<sup>th</sup> 1786 in pursuance of a Warrant from the Honorable Vice President of the Supreme Executive Council Dated Dec<sup>r</sup> the 13<sup>th</sup> 1785 -

To John Lukens Esq<sup>t</sup> }  
Surveyor General }

P. David Lyon D. S.

IN TESTIMONY that the above is a copy of the original remaining on file in the Department of Internal Affairs of Pennsylvania, made conformably to an Act of Assembly approved the 16th day of February, 1833, I have hereunto set my Hand and caused the Seal of said Department to be affixed at Harrisburg, this fourteenth day of March 1904.

*George P. Brown*  
Secretary of Internal Affairs.